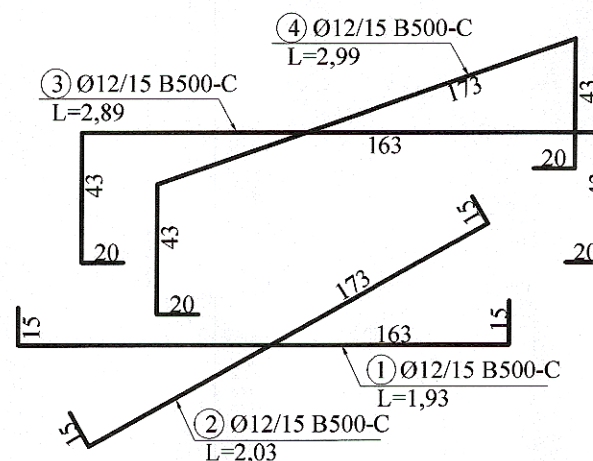
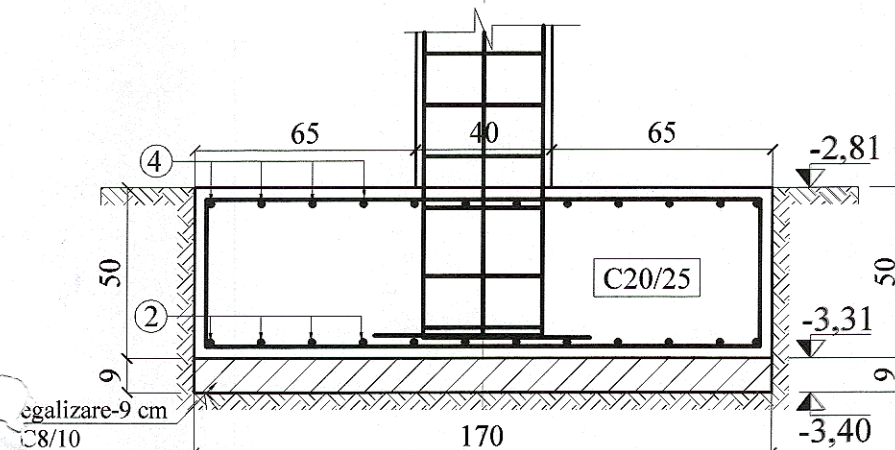
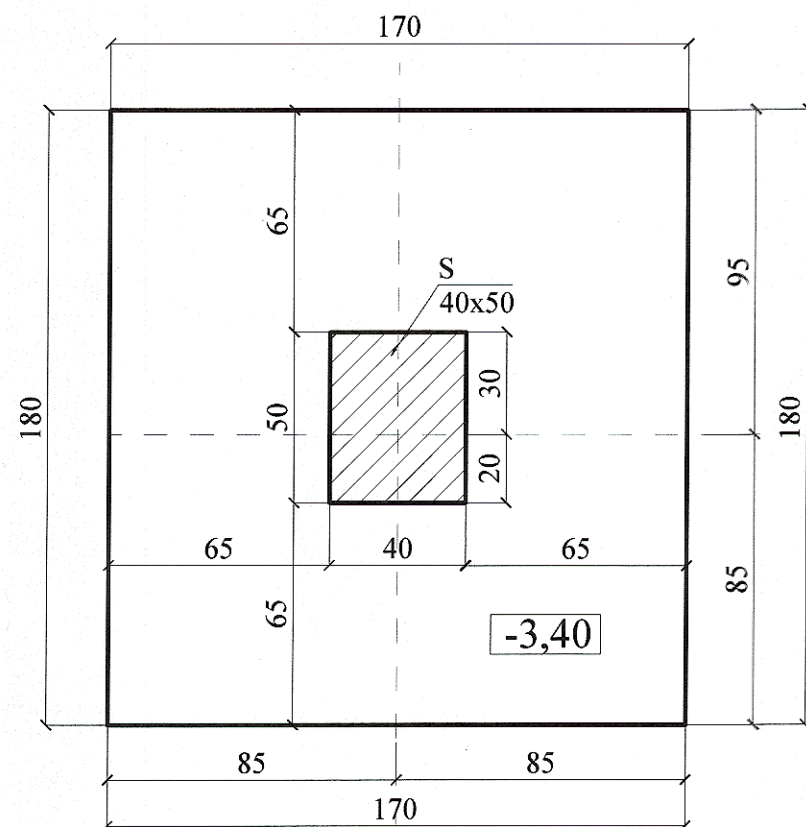
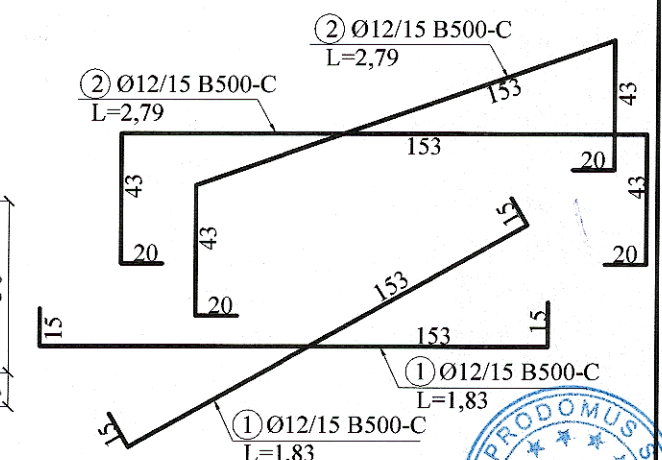
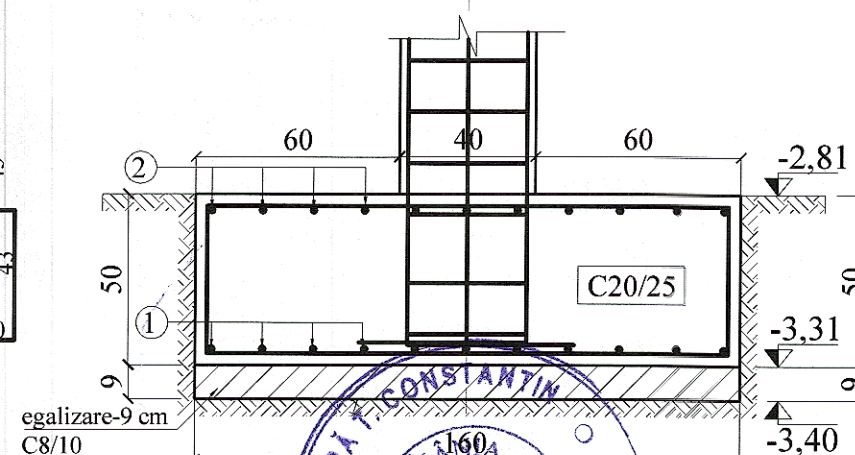
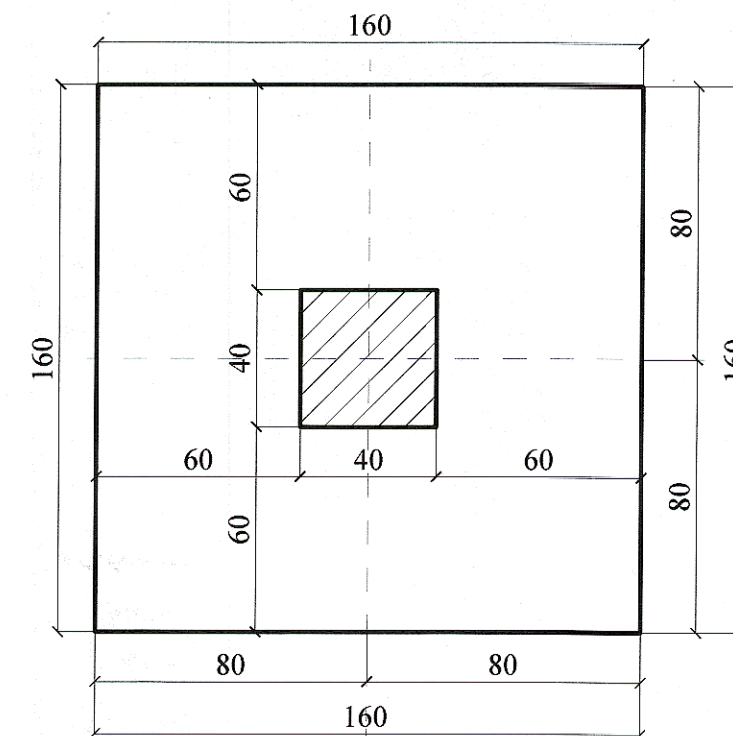


F9-170x180



F10-160x160



EXTRAS DE ARMARE

Elem.	Marca	Φ	Lung. unei bare (m)	Bare pe elem.	Nr. elem.	Nr. bare asem.	Lung. pe diametre (m)		
							OB37	B500-C	
							Φ6	Φ8	Φ12
F9	1	12	1.93	13	1	13	-	-	25.09
	2	12	2.03	12	1	12	-	-	24.36
	3	12	2.89	13	1	13	-	-	37.57
	4	12	2.99	12	1	12	-	-	35.88
F10	1	12	1.83	22	1	22	-	-	40.26
	2	12	2.79	22	1	22	-	-	61.38
TOTAL LUNGIMI PE DIAMETRU							0.00	0.00	224.54
GREUTATEA PE METRU							0.222	0.395	0.888
TOTAL GREUTATE PE DIAMETRU							0.00	0.00	199.39
TOTAL GENERAL (kg)							0 kg	199 kg	

MATERIALE:

Beton: cf. NE012/2022

-egalizare

C8/10/XO/IIAS32,5R/D0-31/T3(S2)

-cuzinet/grinzi fundare+pereti

C20/25/XC1/IIAS42,5R/D0-16/T3

Otel beton conform ST 009-2011: B500-C

- Rezistenta la rupere - 550N/mmp

- Rezistenta de calcul - $f_y=500N/mmp$

- Alungire - 10 %

- Alungire A5-minim 20 %

ab = 3,5 cm - fundatii

PROIECTANT GENERAL: S.C. PRODOMUS S.R.L. BACAU -PR.NR.3/2024

Semnificatie	Nume si prenume	Semnatura	Referat / numar / data	
PROIECTANT DE SPECIALITATE - STRUCTURA				
SC PROCES SRL			Titlu de proiect : CONSTRUIRE CAMIN DE BATRANI	
J37/472/2004 CUI -16577944			ORGANIZARE DE SANTIER	
loc.LAZA,jud.VASLUI tel.: 0742058048			Amplasament : str. Calea Romanului nr. 191,mun.Bacau ,jud.Bacau	
Sef.proiect			Beneficiar : LUCA GHEORGHE si LUCA ELENA	
Proiectat			faza	
Desenat			P.T.H	
Data			Titlul plansei : 1/2	
2024			DETALII FUNDATII F9- F10	
			Plansa R-5	